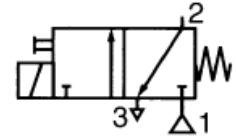


Description:

- Compact solenoid valves for assembly directly on a single-acting pneumatic actuator (cylinder, valve, etc.)
- Short response time
- Easy installation (supply connection, valve body, coil and cable socket can be rotated 360°)
- Compact type of construction
- Integrated exhaust air restrictor
- Manual override


General:

Medium *	Air, filtered
Pressure difference	See characteristics valve body [1 bar = 100 kPa]
Response time	10 to 20 ms

Parts in contact with the medium:*

Housing	Polyamide (glass fibre-reinforced)
Guide pipe	Brass
Armature of magnet and counter-armature	Stainless steel
Springs	Stainless steel
Valve seat	PA + Stainless steel
Seals and valve disc	NBR
End ring	Copper
Insulation class	F
Electrical connection	Device socket 11 mm, industry standard B
Connection 1	Plug connection for hose outside \varnothing 4 mm
Connection 2	G 1/8 thread
Connection 3	M5 (Vent port)

* The resistance of the parts in contact with the medium must be checked separately.



Characteristics valve body:

∅ DN	Flow coefficient (Kv)				Perm. differential pressure		(M)	Exhaust air restrictor	Solenoid valve Art. No.	
	l/min at 6 bar		m ³ /h		min.	max.			~	=
2 <-> 1	2 -> 1	1 -> 2 -> 3	2 -> 1	1 -> 2 -> 3						
1.2	0.5	0.7	0.03	0.04	0	10	λ	With	102967	102968
								Without	On request	On request

Electrical data:

Coils Art. No.		Power					Ambient Temperature of magnet
		Pickup	Holding		hot / cold		
230 V	24 V DC		~	~			
118753	118749	6	3.5	2.5	2.5	3	[C]
118745	118742	12	6	4	5	6.9	-10 ° to 60 °

Special versions (on request):

- Other voltages or frequency on request
- Cable socket with LED and protective circuit

Handling:

- Any mounting position
- Installation and maintenance instructions enclosed with each valve
- Port (1) with plug connection for howe & 4 mm external
- Port (2) with G 1/8 thread
- Vent port (3) with M 5 thread or exhaust air restrictor
- Body can be rotated 360° about port 2
- Magnet can be rotated 360°
- Manual override, latching